



REGIONAL SPECIALISED METEOROLOGICAL CENTRE-TROPICAL CYCLONES, NEW DELHI TROPICAL WEATHER OUTLOOK

DEMS-RSMC TROPICAL CYCLONES NEW DELHI DATED 18.05.2025

TROPICAL WEATHER OUTLOOK FOR THE NORTH INDIAN OCEAN (THE BAY OF BENGAL AND THE ARABIAN SEA) VALID FOR THE NEXT 168 HOURS ISSUED AT 0730 UTC OF 18.05.2025 BASED ON 0300 UTC OF 18.05.2025.

BAY OF BENGAL:

Yesterday's upper air cyclonic circulation over southeast Bay of Bengal, lay over southwest & adjoining southeast Bay of Bengal between 1.5 & 5.8 km above mean sea level tilting southwestwards with height at 0300 UTC of today, 18th May, 2025.

Yesterday's trough extended from southeast Bay of Bengal to north Kerala across above cyclonic circulation over southwest & adjoining southeast Bay of Bengal and central parts of Tamil Nadu between 1.5 & 5.8 km above mean sea level tilting southwestwards with height at 0300 UTC of today, 18th May, 2025.

Scattered low and medium clouds with embedded intense to very intense convection lay over north adjoining central Bay of Bengal and moderate to intense convection lay over rest of Bay of Bengal and Andaman Sea.

***PROBABILITY OF CYCLOGENESIS (FORMATION OF DEPRESSION) DURING NEXT 168 HRS:**

24 HOURS	24-48 HOURS	48-72 HOURS	72-96 HOURS	96-120 HOURS	120-144 HOURS	144-168 HOURS
NIL	NIL	NIL	NIL	NIL	NIL	NIL

***NOTE: EVERY 24HR FORECAST IS VALID UPTO 0300 UTC (0830 IST) OF NEXT DAY**

ARABIAN SEA:

An upper air cyclonic circulation lay over northeast Arabian Sea off south Gujarat 1.5 km above mean sea level at 0300 UTC of today, the 18th May, 2025.

An upper air cyclonic circulation is likely to form over eastcentral Arabian Sea off Karnataka coast around 21st May. Under its influence, a Low-pressure area is likely to form over the same region around 22nd May. Thereafter, it is likely to move northwards and intensify further.

Scattered low and medium clouds with embedded intense to very intense convection lay over eastcentral adjoining southeast Arabian Sea off Maharashtra, Goa, Karnataka and Kerala coasts. Scattered low and medium clouds with embedded moderate to intense convection lay over southeast Arabian Sea, Lakshadweep island area & Comorin area.

***PROBABILITY OF CYCLOGENESIS (FORMATION OF DEPRESSION) DURING NEXT 168 HRS:**

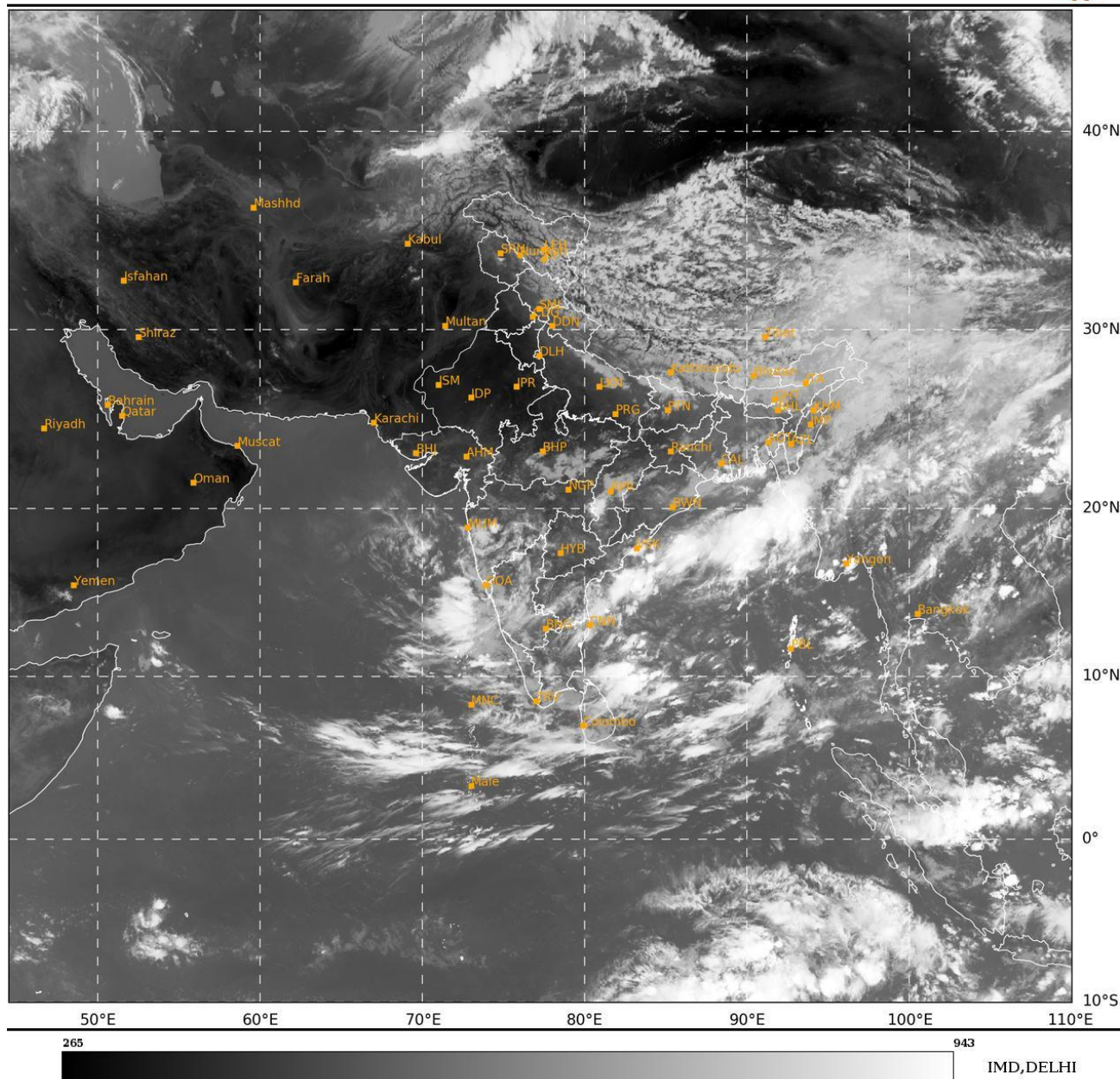
24 HOURS	24-48 HOURS	48-72 HOURS	72-96 HOURS	96-120 HOURS	120-144 HOURS	144-168 HOURS
NIL	NIL	NIL	NIL	NIL	LOW	MOD

***NOTE: EVERY 24HR FORECAST IS VALID UPTO 0300 UTC (0830 IST) OF NEXT DAY**

REMARKS: NIL

SAT : INSAT-3DR IMG
IMG_TIR1 10.8 um
LIC Mercator

18-05-2025/(0545 to 0612) GMT
18-05-2025/(1115 to 1142) IST



Cloud distribution: (a) Isolated: <25%, Scattered:25-50%, Broken: 51-75%, Solid:>75%, Convection Intensity: (a) Weak: Cloud Top Temperature(CTT)>-25°C,(b)Moderate:CTT:-25°Cto-40°C,(c)Intense:CTT: -41°Cto -70°Cand(d)Very Intense::Less than -70°C
PROBABILITY OF CYCLOGENESIS (FORMATION OF DEPRESSION): NIL:0%, LOW:1-33%, MODERATE:34-66% AND HIGH:67-100%
This is a guidance Bulletin for WMO/ESCAP Panel Member countries. Visit respective National websites for Country specific Bulletins